

# PREMIUM GRASS BLADES

## Artificial Turf Installation Guide



Premium Grass Blade's artificial turf is designed for seamless installation and enduring performance. From base preparation to finishing touches, trust our proven methods to deliver superior outcomes that exceed client expectations.



[www.PremiumGrassBlades.com](http://www.PremiumGrassBlades.com)

# GETTING STARTED

## Why Proper Installation Matters + Guide Overview

### Welcome to Professional-Grade Turf Installation

Collaboration is at the heart of what we do at Premium Grass Blades. We help landscapers and professionals achieve flawless, long-lasting artificial turf installations, whether it's a residential lawn, a commercial property, or a high-traffic area.

### Why Proper Installation Matters

#### A Well-Installed Artificial Turf System Provides:

- **Durability:** Ensures the turf withstands heavy use and varying weather conditions.
- **Aesthetic Appeal:** Creates a seamless, natural-looking lawn.
- **Customer Satisfaction:** Exceeds client expectations, leading to repeat business and referrals.

### What You'll Find in This Guide

#### Tools & Materials:

- A detailed list of everything you need for a successful installation, from essential tools to specific materials.

#### Step-by-Step Instructions:

- Step-by-step guidance from preparation to finishing touches ensures a seamless installation.

#### Pro Tips & Troubleshooting:

- Expert insights and solutions for everyday challenges to help you work efficiently and confidently.

### Who This Guide Is For



- **Landscapers:** Elevate your service offerings with professional turf installations.



- **Contractors:** Simplify large-scale installations with efficient processes.



- **DIY Enthusiasts:** Gain the knowledge needed for a professional-grade finish.



🟢 Ready to Begin?

Turn the page to explore the tools and materials you'll need to get started!

# BEFORE YOU START

## Essential Equipment for a Seamless Artificial Turf Installation.

### Turf Cutter or Shovel

- Removes existing grass or turf, reducing effort.



### Landscape Rake

- Levels and grades soil after excavation.



### PGB Weed Barrier

- Prevents weed growth & reduces noise from the base material.



### Wheelbarrow

- Transports soil, debris, and base materials efficiently.



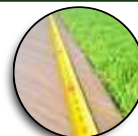
### Drop Spreader *(Avoid broadcaster-style seeders for best results.)*

- Ensures even infill distribution for proper turf support.



### Tape Measure

- Measures the area precisely and marks turf-cutting lines.



### PGB Landscape Nails

- Secure the turf perimeter, seams, and weed barrier.



### Plate Compactor

- Compacts base material for a flat surface, preventing settling.



### PGB Seam Tape

- Joins turf edges securely to prevent lifting or separation.



### Utility Knife

- Cuts turf to fit. Keep extra utility blades on hand.



### PGB Infill Sand Zeo odour or Silica

- Infill adds weight, supports blades, and boosts durability.



### Power Broom or PGB Turf Rake

- Fluffs turf blades for a natural, upright appearance.



# DRAINAGE SOLUTIONS

## Which One is Right for You?

Proper drainage ensures the longevity and performance of artificial turf installations. It prevents water pooling, protects against odours, and maintains the stability of the sub-base. Choosing the proper drainage system depends on the installation's location, climate, and intended use.

### I: Single-Layer Drainage

A single-layer drainage system comprises a compacted base of crushed gravel or decomposed granite. It is the most straightforward and most economical method.



#### How It Works:

- Water filters through the turf and drains directly into the compacted base. The base material allows for basic water dispersion into the natural soil below.
- This system is ideal for DIY projects and smaller-scale installations.



#### Ideal Applications:

- Dry climates or regions with naturally well-draining soil.
- Small residential areas with minimal foot traffic.
- Cost-sensitive projects that prioritize budget over heavy-duty performance.



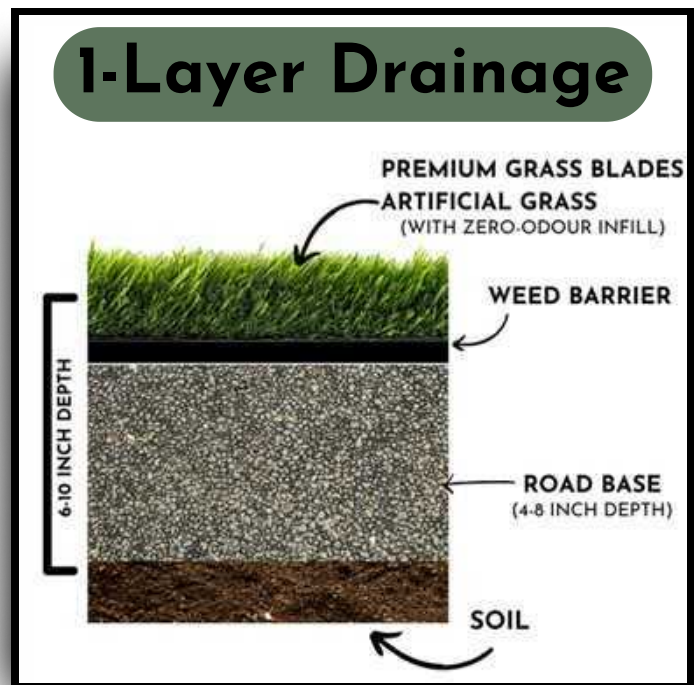
#### Advantages:

- **Affordable:** Requires fewer materials and less labour compared to multi-layer systems.
- **Quick Installation:** Ideal for smaller or time-sensitive projects.



#### Limitations:

- **Limited Performance:** Not Ideal for Poor Drainage Areas.
- **Settling Issues:** The base may settle unevenly over time in areas with high moisture.



### ★ Pro Tip:

*Always evaluate the soil's natural drainage and the installation area's intended use to choose the proper drainage system.*

# DRAINAGE SOLUTIONS

## Dual-Layer Drainage

### 2: Dual-Layer Drainage

This System Incorporates Two Distinct Layers:

- **Lower Layer:** Large crushed stone (3/4 inch aggregate) for structural support and water dispersion.
- **Upper Layer:** Finer gravel or decomposed granite for levelling and stability.



#### How It Works:

- The lower layer acts as a reservoir, allowing water to disperse and drain into the soil, while the finer upper layer provides a smooth, stable surface for turf installation.



#### Ideal Applications:

- Moderate to high traffic areas such as backyards, commercial spaces, or pet-friendly lawns.
- Regions with moderate rainfall where enhanced drainage is required.
- In Pet areas, this system prevents odour build-up by improving drainage flow.



#### Advantages:

- **Improved Stability:** Reduces settling issues compared to a single layer.
- **Enhanced Water Management:** Handles moderate rainfall effectively.
- **Versatility:** Suitable for most residential and light commercial projects.
- **Balanced Performance:** Combines water dispersion with stability, offering a cost-effective solution for moderate drainage needs.



#### Limitations:

- **Limited Performance:** Struggles to handle heavy rainfall or poor soil drainage, leading to potential pooling.



### ★ Pro Tip:

For pet areas, use infill materials like Zeo-Odour Zeolite with no weed barrier, combined with dual or triple-layer systems for optimal odour control and drainage performance.

# DRAINAGE SOLUTIONS

## Triple-Layer Drainage

### 3. Triple-Layer Drainage

This System Features Three Distinct Layers for Maximum Drainage and Structural Integrity:

- **Base Layer:** ¾-inch crushed stone for structural support and drainage.
- **Middle Layer:** Medium-sized gravel for water dispersion.
- **Top Layer:** Fine gravel or decomposed granite for levelling and finishing.



#### How It Works:

Water moves through each layer progressively, from the turf to the top layer. The middle and base layers disperse water before draining into the soil, preventing pooling and ensuring stability.



#### Ideal Applications:

- **High-traffic areas** include sports fields, playgrounds, putting greens and commercial installations.
- **Regions with heavy rainfall** or areas with poor natural drainage.
- **Heavy-duty projects** that require long-term durability.



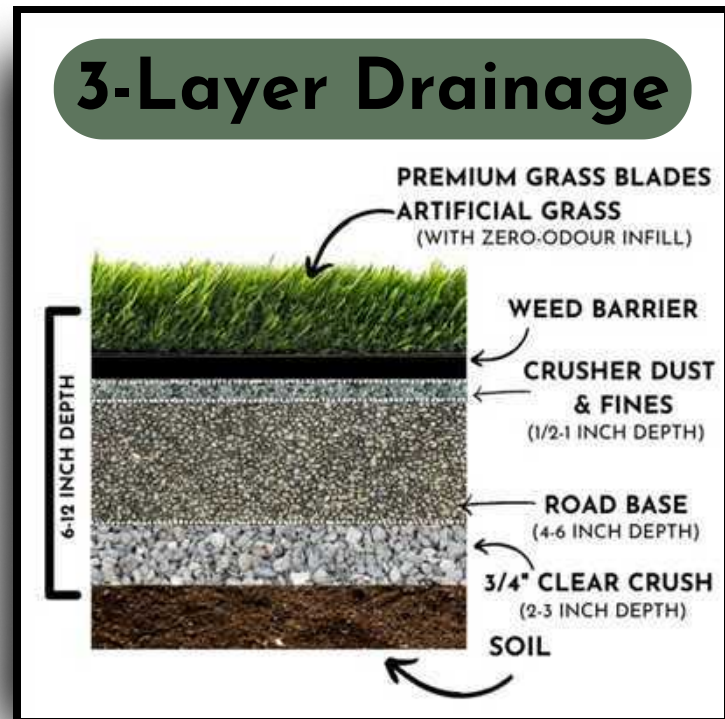
#### Advantages:

- **Maximum Drainage Capacity:** Handles extreme weather conditions and large volumes of water.
- **High Stability:** Ensures long-term performance in high-traffic areas.
- **Versatility for Challenging Environments:** Ideal for sites with uneven terrain or poor soil conditions.
- **Prevents Soil Erosion:** The multi-layer system minimizes water runoff impact, protecting underlying soil from erosion and preserving long-term stability.



#### Limitations:

- **Cost and Labour Intensive:** The most materials and professional expertise are required to install.
- **Time-Consuming:** Installation takes longer than single or dual-layer systems.



# SEAMING

## Seaming Basics

### How to Seam Artificial Turf

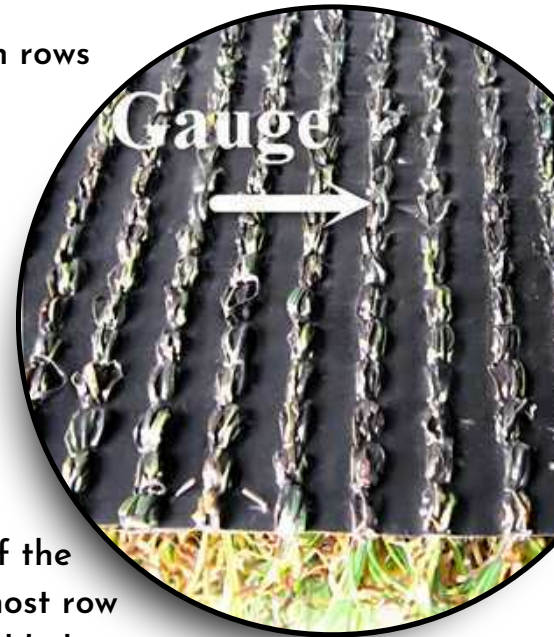
#### Step 1: Align the Turf Edges

- Lay the turf sections side by side, ensuring the blades lean in the same direction for a seamless appearance.
- To marry the seam, trim the edges at least three stitch rows to create clean, straight lines for better bonding.

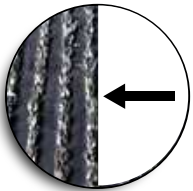
### The Process: of Marrying the Seam

#### Understanding the Gauge:

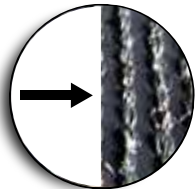
- The gauge refers to the spacing between rows of stitching on the turf backing. For seamless results, the edges of the turf should align precisely with the gauge.



#### Trimming for Precision:



- **Cut to the End of the Gauge:** On one side of the seam, trim three stitch rows along the outermost row of stitching, removing any excess backing and helping create a clean, straight edge.



- **Cut to the Beginning of the Gauge:** On the other side of the seam, trim three stitch rows to the innermost edge of the first row of stitching. This adjustment allows the two sections to meet snugly without gaps or overlaps.

#### Re-Align the Turf:

- Gradually adjust the turf to achieve a near-invisible seam, ensuring the optimal gap between both pieces. This may require flipping the turf over multiple times, making minor adjustments, and then flipping it back to smooth the seam by running your hands across it.

#### Anchor and Temporarily Secure the Seam:

- Lightly secure both sides of the turf with nails every 3 to 5 feet, about 1 foot from the seam, to prevent movement. Do not fully drive the nails in—this allows for adjustments. Flip the turf over multiple times to check the seam and ensure it remains invisible. If it's visible, remove the nails and realign until satisfied. This dry run ensures perfect alignment before applying adhesive.
- Now fold back the turf on both sides of the seam, placing an object on the folded area if necessary to prevent it from unfolding.

# SEAMING

## Seaming Basics



### Step 2: Position Seam Tape

- Place seam tape centered underneath where the turf edges meet.
- Ensure the adhesive side faces up and runs the entire seam length. Use spikes if needed to secure the seaming tape in place temporarily. Before moving on, ensure the turf has not moved, and the seam is still optimal.



### Step 3: Remove the Adhesive Backing

- Carefully peel off the protective backing to expose the adhesive surface.
- Work in small sections to prevent premature sticking.
- Keep the turf slightly lifted while peeling to avoid debris or dust sticking to the adhesive.



### Step 4: Join the Turf Sections

- Carefully align the turf edges and press them firmly onto the adhesive. For best results, use 2-4 people and maintain an even gap throughout the process. Smooth the seam by hand to eliminate gaps.
- Follow the standard seaming process using the zipper method for a tight and secure seam.



### Step 5: Secure the Seam

- Place nails every 6 inches and 2 inches from the seam along the seam to provide additional reinforcement.
- Drive nails in at a slight angle to anchor the turf securely without pulling the fibres down.



### Step 6: Weigh Down the Seam

- Place weight along the seam to ensure a secure bond. The best method is to use 2x6 planks weighed down with sandbags for at least 24 hours.
- Remove or hammer down the temporary nails holding the turf in place.

# SEAMING

## Tips and Tricks for Perfect Seams

### Tips and Tricks for Perfect Seams

- **Work in Warm Weather:** Turf is more pliable in warmer conditions, making seams easier to align and secure.
- **Use a Chalk Line:** Mark a straight line where the turf edges will meet for precise alignment.
- **Minimize Head Seams:** Avoid head seams (end-to-end joins) whenever possible, as they are harder to conceal. Side seams (lengthwise joins) are easier to blend.

### Inspect Blade Direction:

- **Check the Pile Direction:** Ensure all turf sections have blades leaning in the same direction to avoid visible seams.
- **Use Weight for Drying:** Place weights (e.g., sandbags) along the seam while the adhesive cures for a stronger bond.
- **Leave a Gap for Expansion:** Leave a small gap between turf sections to allow for expansion and contraction in extreme temperatures.
- **Always Use a Sharp Utility Knife:** This ensures clean cuts without fraying the backing.
- **Take Your Time to Make Precise Cuts:** Rushing can result in uneven seams.
- **Inspect the Blades After Marrying the Seams:** Ensure they are upright and uniformly aligned.



### ★ What Not To Do

- **Don't Rush the Adhesive Application:** Ensure the adhesive on the pre-applied seam tape is evenly pressed along the edges.
- **Avoid Visible Gaps:** Misaligned edges or uneven trimming create noticeable gaps in the seam.
- **Don't Skip the Seam Roller:** A seam roller ensures proper adhesion.
- **Don't Overstretch the Turf:** Pulling the turf too tightly can cause seams to separate over time.
- **Avoid Heavy Traffic on Fresh Seams:** Allow adhesive to cure fully before walking or placing weight on the seams.

# INSTALLATION

## Base Preparation

### 1. Preparation

#### Measure the Area:

- Use a tape measure to calculate the total square footage.
- Add 5% extra for cutting and adjustments.

#### Excavate the Site:

- Depending on the drainage layer used, remove 4-10 inches of grass, soil, or debris with a turf cutter, shovel, or pickaxe.
- Ensure the base is level and free of rocks, roots, and other obstructions.



### 2. Base Preparation

#### Add Base Material:

- Depending on the chosen drainage type, evenly spread the material to create a compact, stable base for proper drainage and prevent uneven settling.

#### Level and Compact:

- Use a landscape rake to level the base material.
- Lightly moisten the aggregate and compact it in 2-3 inch increments using a plate compactor. Avoid overwatering to prevent a sponge effect.

#### Check for Proper Drainage:

- Ensure the base slopes slightly (1-2%) away from structures for adequate water runoff.

#### Smooth the Surface:

- For two or three-layer drainage systems, finish with a layer of crusher fines to create a flat, smooth base. This supports the turf and ensures long-term stability.



### ★ **Compaction Tips**

*Lightly moisten the aggregate between compactor passes, avoiding excess water to prevent a sponge effect. Compact in 2-3 inch layers, finishing with crusher fines for a smooth, stable base that supports Premium Grass Blades turf.*

# INSTALLATION

## Weed Barrier

### 3. Weed Prevention Layer

#### Benefits of Using a Weed Barrier

- **Prevents Weed Growth:** Install the weed barrier between the crusher fines and turf backing for effective weed prevention.
- **Enhances Stability:** Provides additional support to the base material.
- **Reduces Noise:** Damps the sound of base material crunching against the turf backing.
- **Prolong Turf Lifespan:** Helps maintain a clean and stable surface beneath the turf.



#### When Not to Use a Weed Barrier

- **Pet Areas:** Weed barriers can trap urine, leading to odours. Instead, ensure proper compaction of the base material for drainage.
- **High-Drainage Requirements:** A weed barrier may slow water infiltration in areas with heavy rainfall or poor natural drainage.

#### Tips for Installation

- For extra durability, use PGB's non-woven landscape cloth, overlapping edges by 3-6 inches. Smooth out wrinkles to prevent uneven turf installation. Add a double weed barrier to reduce noise and enhance protection for putting greens.

#### Common Mistakes to Avoid

- **Using a Barrier in Pet Areas:** Traps urine, causing unpleasant odours.
- **Insufficient Overlap:** Can allow weeds to grow through seams.
- **Poor-Quality Fabric:** Thin or cheap materials can degrade quickly and compromise effectiveness.



#### ★ Pro Tip

**Wildlife Protection:** Use wire mesh to protect turf installations from moles and other wildlife.

# INSTALLATION

## Laying your Turf

### 4. Aligning and Laying the Turf

Ensure the turf looks natural and seamless by properly aligning the blade direction and positioning the rolls.

#### Align Turf Grain:

- Inspect the turf to identify the pile direction (blade lean).
- **Front yards:** Orient blades towards the street.
- **Backyards:** Orient blades towards the house or primary viewing area.



#### Position Turf Rolls:

- Ensure gutters do not drain directly onto turf areas.
- Check for windows or any reflective surface that could magnify heat onto the turf and cause damage.
- Begin in a corner or along a straight edge to ensure uniform alignment across the area.
- Allow the rolls to acclimatize in a warm environment before installation. In colder climates, this step makes the turf more pliable and easier to work with.

#### Minimize Visible Seams:

- Avoid head seams (longitudinal joins) as they are harder to conceal.
- Use side seams (lateral joins), which are easier to blend as turf blades naturally cover the join.
- Maintain proper seam spacing to prevent a "mohawk" effect.

#### Lay the Turf:

- Roll out each section of turf, aligning edges carefully to maintain a seamless appearance.
- Overlap edges slightly for precise trimming later.

# INSTALLATION

## Cutting to Fit

### 5. Precision Cutting and Trimming

Achieving clean, professional edges when cutting artificial turf requires careful technique and the right tools. Use a sharp utility knife, refreshed with a new blade every 10-12 uses, to ensure precise cuts without fraying.

#### Cutting Along Walls and Fences:

- Gently pull the turf taut and press it against the base of the wall or fence.
- Position the utility knife on the turf backing closest to the obstacle.
- Make small, incremental cuts (3-4 inches at a time), ensuring the turf stays snugly positioned.
- Periodically lay the turf flat to check alignment, leaving a slight gap of no more than 1/8-2/8 inch from the edge for a flawless finish.



#### Trimming Around Corners, Trees, or Posts:

- Make relief cuts from the backing outward to remove excess material and ease the process.
- Regularly check for proper alignment and smooth transitions between sections.

#### Precision Cutting for Seaming:

- Remove at least three rows of stitches from each turf piece for seamless integration.

#### Recess from Walkways:

- Slightly recess the turf from walkways for a smooth transition between surfaces.

#### Turf Ribbon Removal:

- Always remove the ribbon from the edge of the turf.



#### ★ Pro Tip:

*Keep blades sharp for clean edges; dull blades can fray turf. Trim precisely, allowing no more than 2/8 inch from the edge for a seamless, durable, and polished look.*

# INSTALLATION

## Securing and Fluffing your Turf

### 6. Securing the Turf

Once the turf is properly trimmed, secure it to the base to prevent movement and ensure a long-lasting installation.

#### Inserting Spikes:

- Insert spikes or landscape staples every 6 inches along the perimeter for stability.
- Then, secure the turf by placing spikes in rows up and down the turf for added reinforcement.
- Maintain a distance of approximately 2 inches from the turf's edge to avoid fraying or uneven edges.
- Use one spike per square foot for optimal turf security.



#### Hammering Technique:

- Use gentle, even force when hammering spikes to avoid creating depressions in the turf.
- Ensure the nail or staple heads are flush with the backing without compressing the turf.
- Do not hammer nails into cold or hard ground to prevent damage or divets.

### 7. Brushing Up the Turf

- Groom regularly for a polished look and lasting performance.

#### Tools for Brushing:

- Power Broom: Motorized bristles lift turf blades evenly, which is ideal for large installations.
- PGB's Turf Rake: Nylon tines lift and refresh blades, making turf maintenance easier than bristle brooms.



#### Brushing Technique:

- Brush against the pile direction to lift blades and maintain an upright position.
- Use steady, even pressure when brushing to protect the turf backing and prevent shifting the base material. Avoid over-brushing seams to maintain a natural look and prevent separation.

#### ★ Pro Tip:

*Before hammering spikes, pull the blades away to prevent trapping them under the head. This keeps the turf upright, smooth, and stable for a polished, professional finish.*

# INSTALLATION

## Adding Infill - Lock in Stability & Performance

Infill keeps blades upright, adds ballast, manages heat, and in pet zones neutralizes odour. Check your turf's spec sheet for exact infill weights

### 8. Stabilizing Turf with Infill

#### Step 1: Pre-check & Prep

- Turf and infill must be completely dry.
- Power-broom or stiff rake the turf to raise fibres before starting.
- Check seams—make sure they are fully secured before adding weight.
- Clear all debris (leaves, dust, construction waste).

#### Step 2: Load the Spreader Correctly

- Use a drop spreader for accuracy (never broadcast by hand).
- Fill only ½ full to keep the flow even and avoid clumping.
- Set the gate to half-open for the first pass.

#### Step 3: Broadcast in Multiple Passes

- Walk north-south, then east-west in a criss-cross pattern.
- Apply ½ the required weight per pass—never dump all at once.
- Stop every 100 sq ft to check consistency.

#### Step 4: Work it In Between Lifts

- Power-broom on medium RPM or use stiff nylon rake.
- Brush fibres upright, letting infill settle between blades.
- Infill should sink ½-¾ of blade height, not sit on top

#### Step 5: Repeat Until Final Coverage Achieved

- Add small "lifts" (¼ lb/sq ft at a time) and broom between each lift.
- Do not exceed recommended weight—overfilling causes matting.

#### Step 6: Repeat Until Final Coverage Achieved

- Perform the "foot-twist test"—fibres should rebound instantly.
- If fibres are still leaning, add another light lift.



# ACCESSORIES

Professional Products for a Flawless Installation.

Silica Sand Infill	PGB Turf Armour	PGB Zeo-Odour Infill
		
<p>Clean, kiln-dried sand is used to weigh down turf and support the structure.</p>	<p>A premium, dust-free coated sand engineered for cleaner handling.</p>	<p>Natural volcanic mineral that neutralizes odours and manages heat.</p>
<p>Adds ballast to prevent turf movement and ripple. Supports upright blade posture over time. Use a 50/100 mesh for putting greens to dial in ball speed and roll consistency.</p>	<p>Acrylic-coated silica with reduced airborne dust. Minimizes compaction and improves drainage. Ideal for clients with dust sensitivities or those in high-traffic areas. Flows smoothly and brushes in evenly.</p>	<p>Absorbs ammonia from pet urine and organic waste. Helps reduce surface heat and moisture buildup. Can be layered beneath silica or used as top infill. Long-lasting and environmentally friendly.</p>
PGB 6-Inch and 7-Inch Spiral Nails	PGB Adjustable Collapsible Turf Rake	PGB Self-Adhesive Turf Seaming Tape
		
<p>Perfect for all turf projects, these corrosion-resistant spiral nails provide unmatched stability and long-lasting performance, ensuring secure installation in perimeters, seams, and high-traffic areas.</p>	<p>Restores flattened blades for a natural look; adjustable (27"-48") and collapsible for easy storage and transport. Perfect for pros or as a customer gift.</p>	<p>This tape, measuring 6 inches wide and 33 feet long, is crafted to seamlessly bind artificial grass pieces together.</p>

# PROFESSIONAL ARTIFICIAL TURF CLEANING SERVICES

Professional Artificial Turf Cleaning Services



**Express Power  
Broom**

Quick debris and surface weed removal and infill top up to refresh your turf.  
(From \$149)



**Seasonal Deep  
Clean**

Full turf shampoo, power brooming, and sanitization for year-round freshness.  
(From \$199)



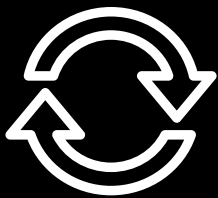
**Pet Turf  
Deodorizing**

Enzyme-based deep clean to eliminate pet odors and bacteria buildup.  
(From \$219)



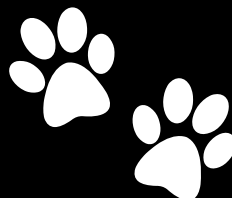
**Gym Turf  
Refresh**

Sanitization and debris removal for cleaner, high-performance indoor turf.  
(From \$149)



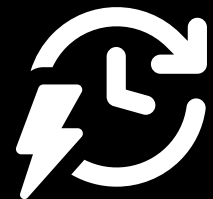
## Revitalize Your Lawn

Extend turf life with debris removal & infill refresh.



## Eliminate Pet Odors

Expert turf cleaning and disinfecting for long-lasting results.




## Quick & Thorough

Deep clean & deodorize with enzyme-based treatments.

 **Book Your Cleaning Today!**

 [www.PremiumGrassBlades.com](http://www.PremiumGrassBlades.com)

 [info@PremiumGrassBlades.com](mailto:info@PremiumGrassBlades.com)

 604-757-2899